

Notice of Construction Works for New Waste Disposal Area and of Accompanying Establishment of Prohibited Area (From April 1, 2023 to March 31, 2024)

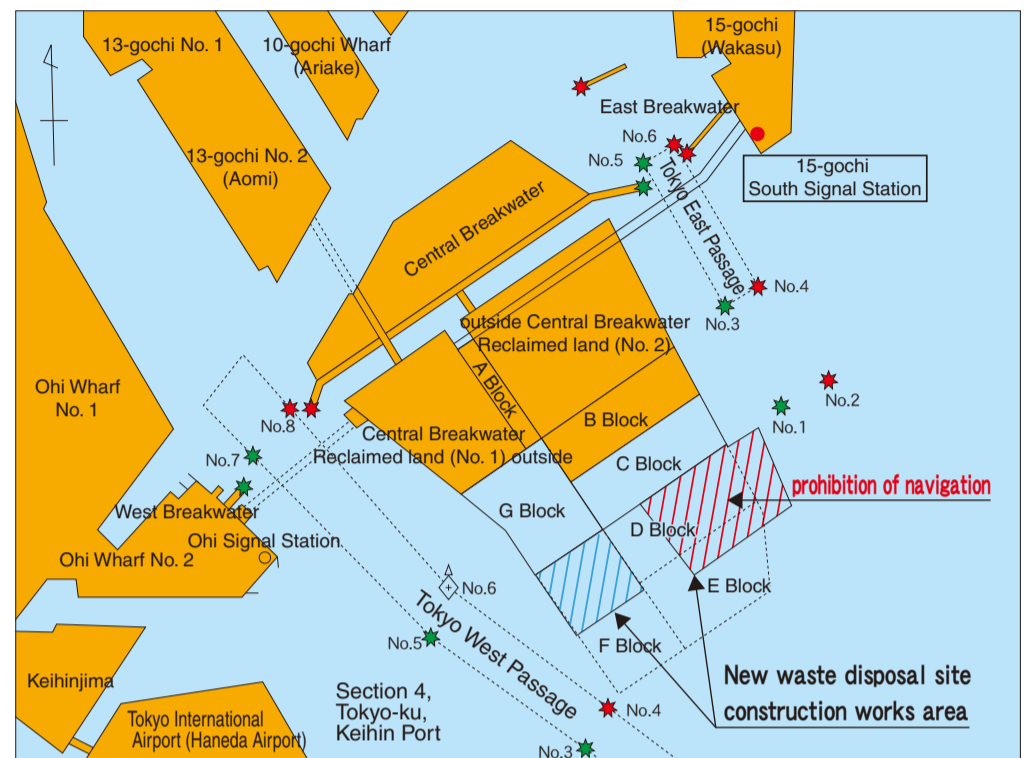
- The construction work of the new waste disposal area will be continued as described below (See Fig.-1) in the seaward area adjacent to Umino-mori 3-chome, Koto-ku, Tokyo Prefecture (in Section 4, Tokyo-ku, Keihin Port).
- Mariners are requested to exercise due caution when sailing in the vicinity.

Description

1 Outline of the works

- (1) D Block
 Sealing and back-filling operations, embankment construction, and sea bed excavation for further filling space.
- (2) F Block
 Temporary storage and transfer to G Block and C Block (landfill operation), by the Tenyu No. 2 (special barge designed to handle them), of dredged mud and sand carried by mud and sand barges.

Block name		Year and month	2023											
Type of work			Apr.	May	Jun.	Jul.	Aug.	Sep.	Oct.	Nov.	Dec.	Jan.	Feb.	Mar.
D Block	Embankment construction work	K works area												
		L works area												
		M works area												
		N works area												
	Further excavation work													
Water shielding and embankment filling operations	2021													
	2022													
	2023													
F Block	Mud and sand transfer work													



※ The Tokyo West Passage No. 6 lightbuoy has been removed and replaced by a virtual AIS aid to navigation.

Fig.-1 Location chart

2. Prohibited area and period

- ⊙ **Period : April 1, 2023 to March 31, 2024**
- ⊙ **Area : Water area enclosed by lines joining, in sequence, the following points 'a' to 'e' and the shore lines connecting 'e' and 'a'.**

Point	Reference point	Direction	Distance	Latitude (north)	Longitude (east)
a	From 15-gochi south signal station	184°11'	2,821m	35°35'18.7"	139°49'56.8"
b	From Point 'a'	56°25'	300m	35°35'24.0"	139°50'06.7"
c	From Point 'b'	152°11'	800m	35°35'01.0"	139°50'21.7"
d	From Point 'c'	236°25'	1,080m	35°34'41.6"	139°49'45.9"
e	From Point 'd'	326°25'	850m	35°35'04.6"	139°49'27.2"

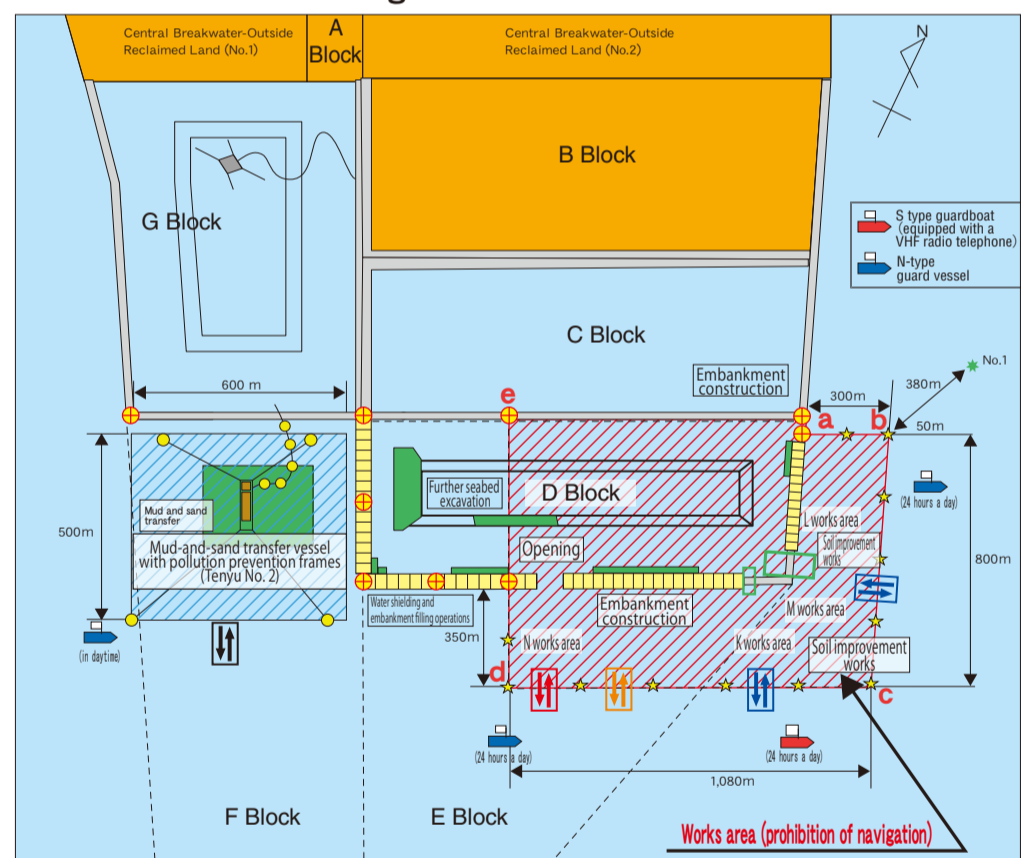


Fig.-2 Works area chart

3 Safety measures

- (1) Guardboats
 For the safety of navigation of vessels, guardboats will be posted as follows and endeavors will be made to provide information for, and to guide, vessels sailing in the vicinity: one guardboat each, day and night, each to the east, west and south of the works area (prohibited area) and another one, in daytime only, to the west of the mud-and-sand transfer operation. (See Fig.-2 for the location of guardboats.) Their signs and signals are as shown in Fig.-5.
- (2) Markers
 In order to clearly indicate the works area and the embankments, marker light beacons have been established as illustrated in Fig.-2. The details of the marker lights are as shown in Fig.-3.

Markers for works	Marker light buoy for indicating works area (☆)		Marker light for indicating embankments (⊕)	
		Light character: Single flashing every 4 sec. Light color: Yellow Luminous range: 4.5 nautical miles Paint color: Yellow Synchronous flashing system		Light character: Single flashing every 4 sec. Light color: Yellow Luminous range: 2.2 nautical miles Paint color: Yellow Synchronous flashing system

Fig.-3 Markers for works

4 Identification flags for vessels engaged in the works

Vessels involved in the works display the identification flags as illustrated in Fig.-4.

Identification flags	•Workboats for the construction of the New Waste Disposal Area	•Workboats, etc. to/from the new waste disposal area	•Mud-and-sand barges entering/leaving special vessel for mud-and-sand transfer	•Mud-and-sand barges bound for Chiba	•Diving support boats
	Workboats entering/leaving through the south side of D Block (Light blue) (50×80cm)	Workboats entering/leaving through the east side of D Block (Green-yellow) (50×80cm)	Mud and sand barges entering/leaving F Block (White) (50×80cm)		
	(60×90cm)			(100×90cm) (No.1~99)	(Signal board showing the international code flag "A" (Common to all business places))

Fig.-4 Identification flags

Legend		Works area (prohibited area)		Entrance/exit for mud and sand carriers (for sand and mud transfer)
		Works area for dredged sand and mud temporary storage and transfer		Entrance/exit for workboats (engaged in excavating operations for further filling space)
	Area currently worked		Entrance/exit for workboats (for embankment construction work)	
	Marker light buoy for indicating works area		Entrance/exit for workboats (engaged in sealing and back-filling operations)	
	Marker light for indicating embankments		Anchor light (white)	
	Tenyu, No.2 a vessel designed to transfer mud and sand		Marker buoys (yellow flashing every 4 seconds; approx. luminous range of 4 km) to indicate the position of the tip of the anchor and that of the floater pipe.	
	Principal dimensions		Length(143.4m)× Breadth(32.2m)× Depth(19.5m)	

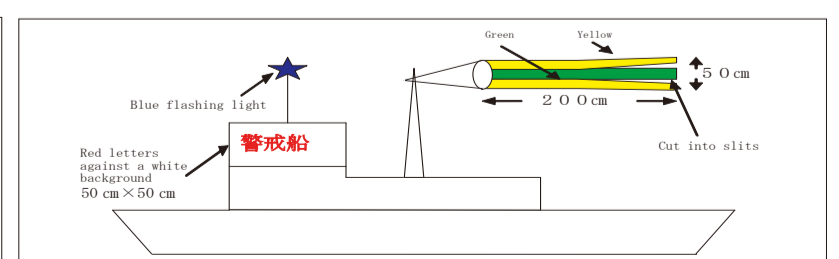


Fig.-5 Display of guard boat

For inquiries, contact	Employer	Offshore Land Reclamation Section, Tokyo Port Construction Office, Tokyo Metropolitan Government, at 03-5500-2493	Contractor	Public interest incorporated association Tokyo Navigation Safety & Information Management Office, The Tokyo Wan Association for Marine Safety, at 03-6457-1505
-------------------------------	-----------------	---	-------------------	--