

Notice of Port of Tokyo Bay Port Road Nanboku Line Submerged Caisson Construction

from April 1, 2017 to July 31, 2017

- Offshore construction will be carried out as noted below.

Details

1 Overview

◆ Light Beacons and Lighted Buoys

Light beacons and lighted buoys marking the construction area will be removed from the Chubo North Fairway in mid-March.

◆ Underwater Survey

An underwater investigation of magnetic anomalies will be carried out within Area No. 10 using diver boats. (Refer to Figures 1 and 2)

◆ Connection Construction

End steel shells constructed at factory will be towed to work site, then collectively constructed on the Central Breakwater Side connection and Area No. 10 Side connection using 700 t crane vessels. (Refer to Figures 1 and 2)

◆ On-land earth and sand removal

Surplus soil on land will be loaded at the Area No. 10 ferry wharf and transported by sea to Kawasaki, Chiba, and Yokohama. (Refer to Figures 1 and 2)

◆ Period

April 1, 2017 - July 31, 2017

Construction Type	2017				Notes
	April	May	June	July	
Underwater Survey (Area No. 10 Side)	[Bar spanning April to July]				
Connection Construction (Central Breakwater Side)		3 days during period			Steel Shell Collective Construction
Connection Construction (Area No. 10 Side)			3 days during period		Steel Shell Collective Construction
On-land earth and sand removal (Area No. 10 Side)	[Bar spanning April to July]				

2 Safety Measures

- Work will be carried out during the daytime hours (from sunrise to sunset) during the work period.
- Construction vessels may be moored in construction area overnight depending on work conditions.
When stopped during the night, in addition to displaying the lamps required by law, flashing indicators (1 yellow light flash per 4 seconds) will be installed on the 4 corners of the work ship group.
- Patrol Boats**
In general, patrol boats will be assigned to the ocean areas around work areas during offshore work (daytime).
For the connection construction (Central Breakwater side), work vessels will also be on standby or moored at the work sites even after work is completed (during the night), so 1 S type patrol boat (Marine VHF radio signaling capable) will continually be assigned to patrol the area around the area providing information and caution to nearby vessels. (Refer to Figures 2 and 3)
- Construction Vessel Markers**
 - Lighted buoys will be deployed to indicate construction vessel anchor locations. However, only normal buoys will be used for daytime work only.
 - Construction vessels will display the lights, beacons, symbols and marker flags required by law. (Refer to Figure 4)
- A "Nanboku Line Safe Navigation Information Management Office" will be established and carry out the following.
 - Collection of information on vessel traffic around construction area
 - Provision of information on construction ship and patrol boat movement, caution, etc.

Figure 1 Guide Diagram

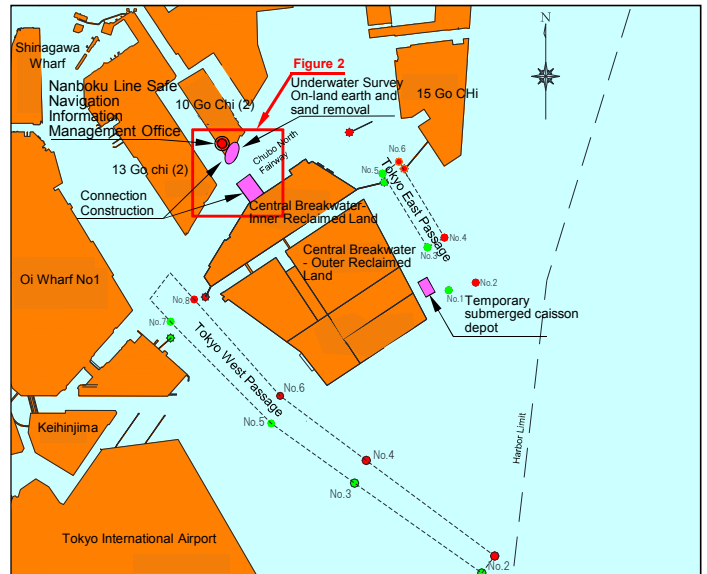


Figure 2 Construction Areas (Underwater Survey, On-land Earth and Sand Removal, Connection Construction Conditions)

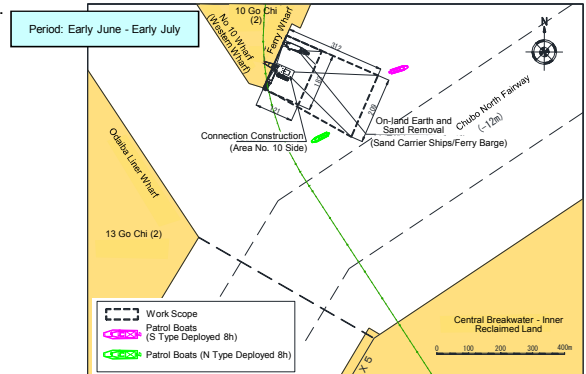
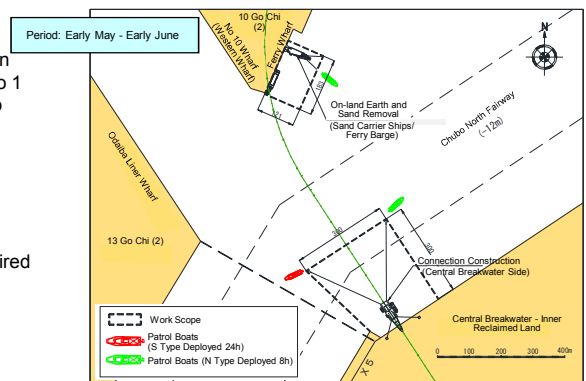
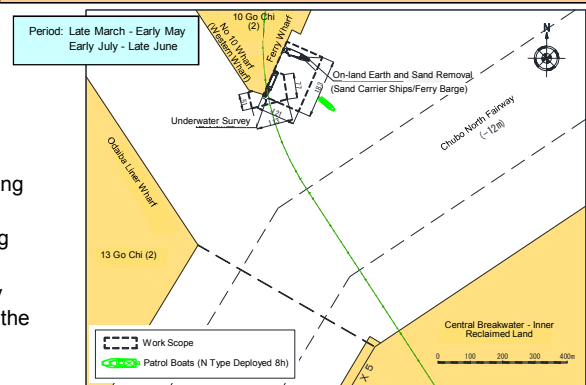


Figure 3 Patrol Boat Indications

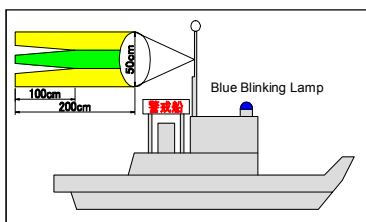
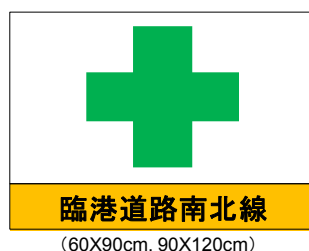


Figure 4 Marker Flags



Inquiries

Ministry of Land, Infrastructure, Transport and Tourism,
Kanto Development Bureau
Port of Tokyo Office
Tel.: 03-5534-1367

Inquiries related to this leaflet

Nanboku Line Safe Navigation Information Management Office
Tel.: 03-5579-6638